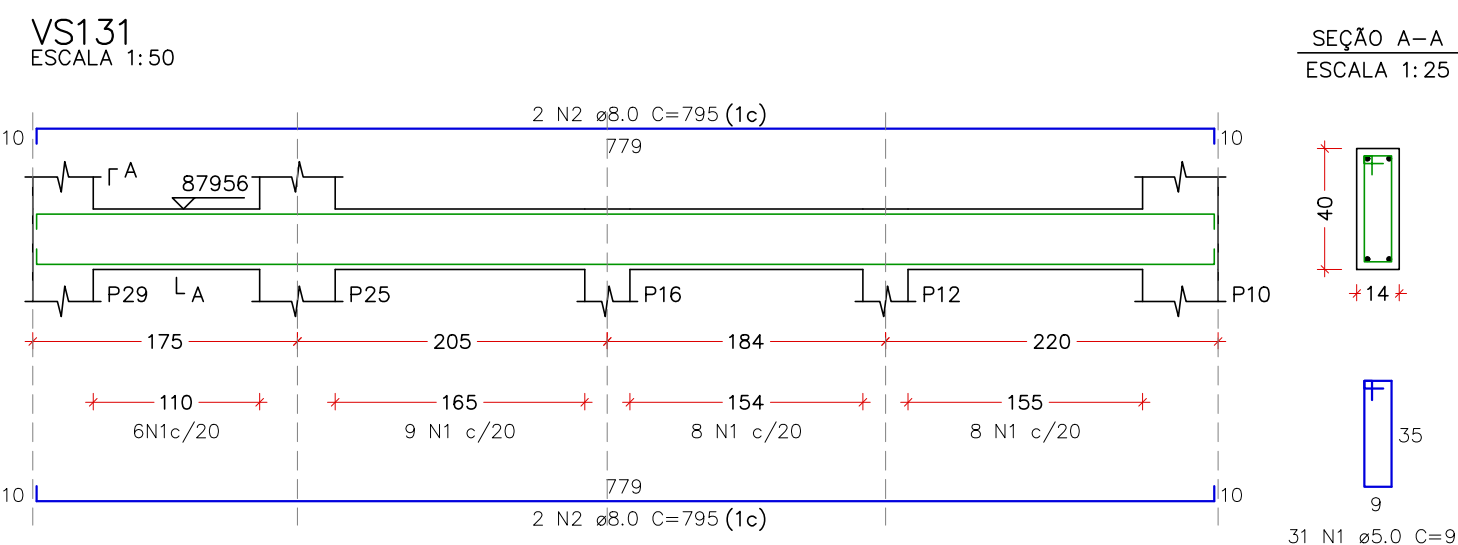
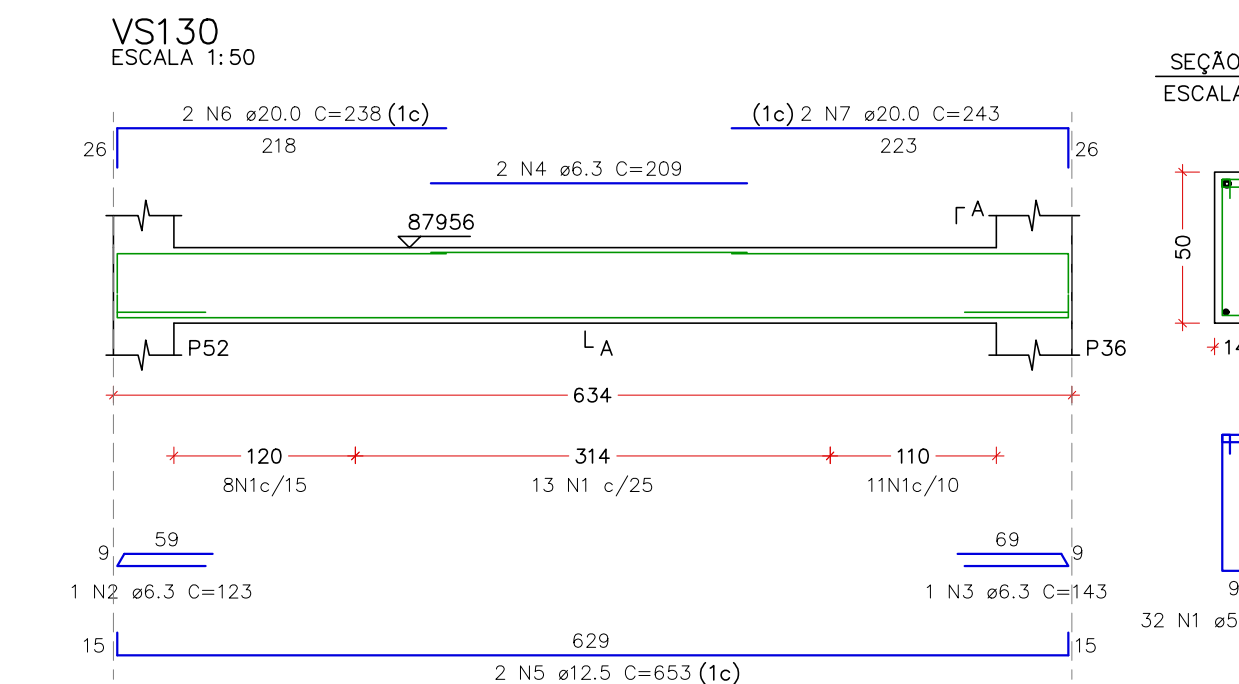
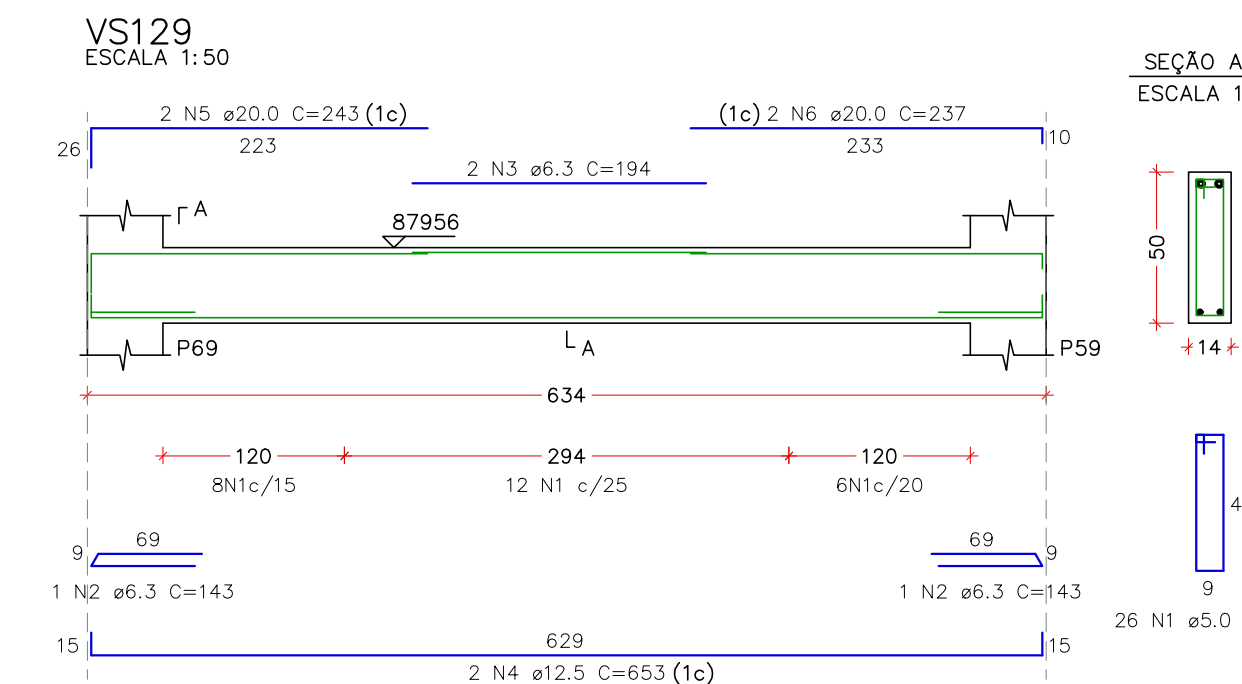
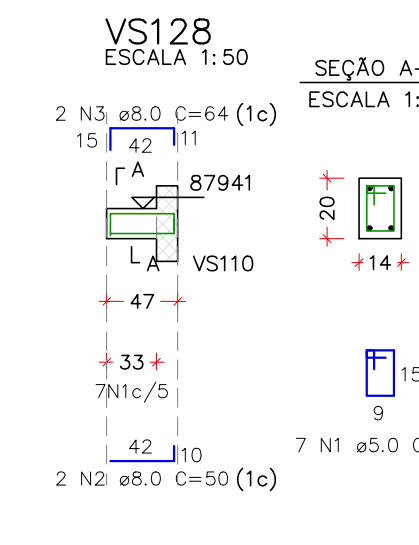
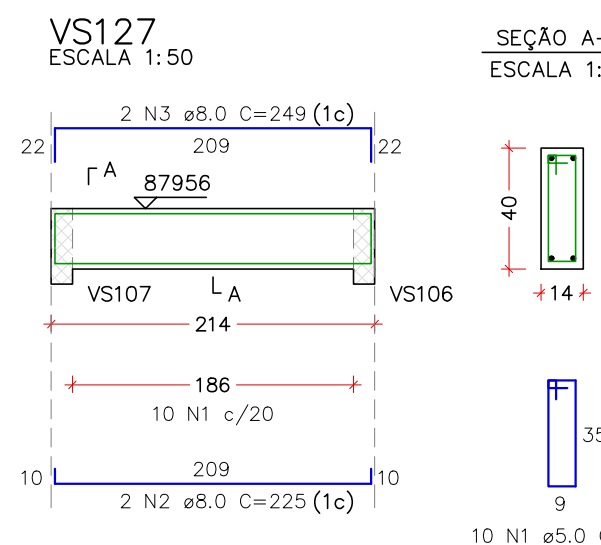
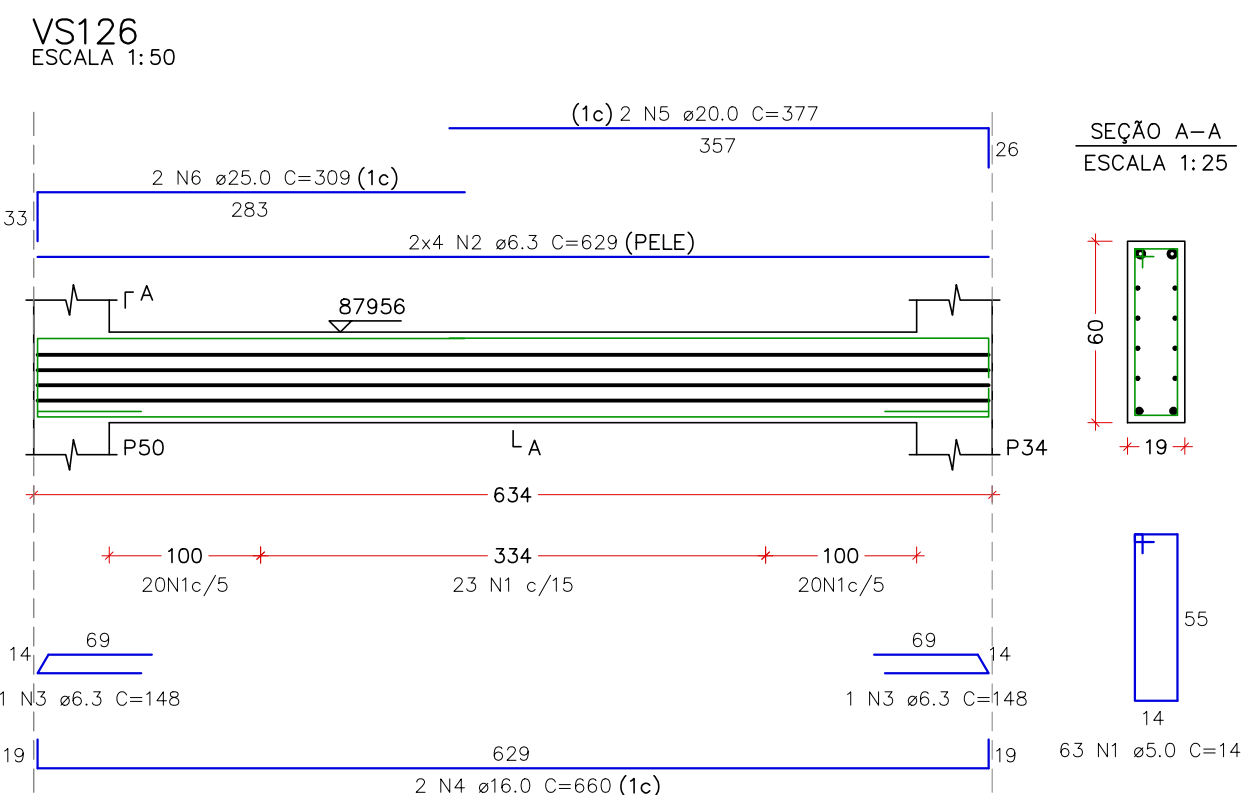
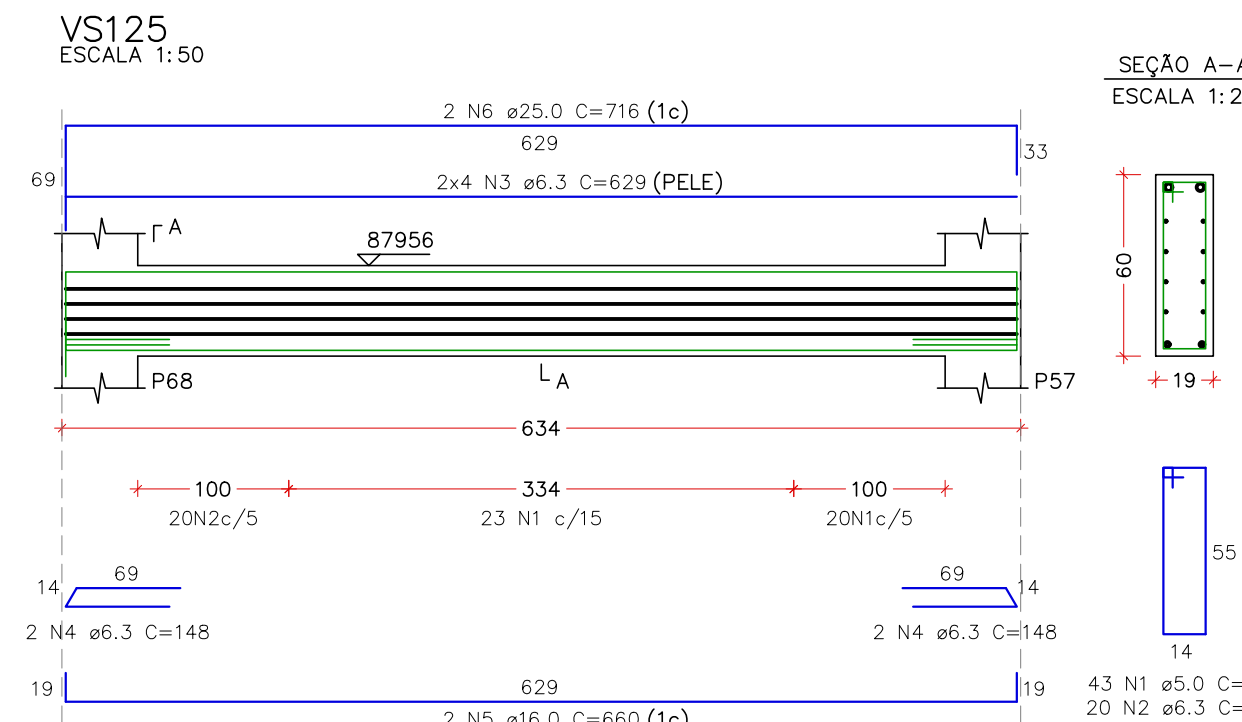
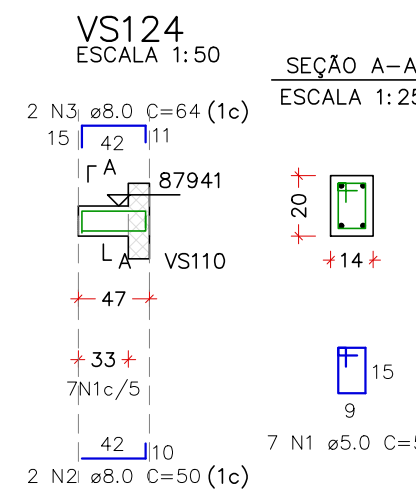
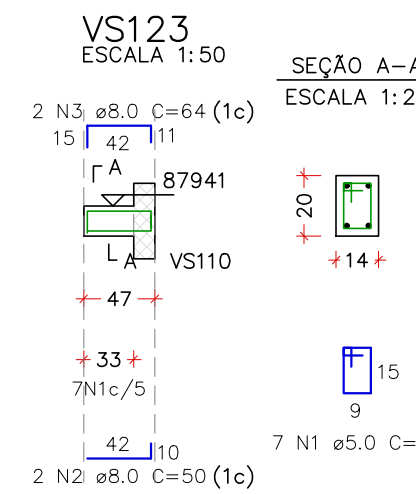
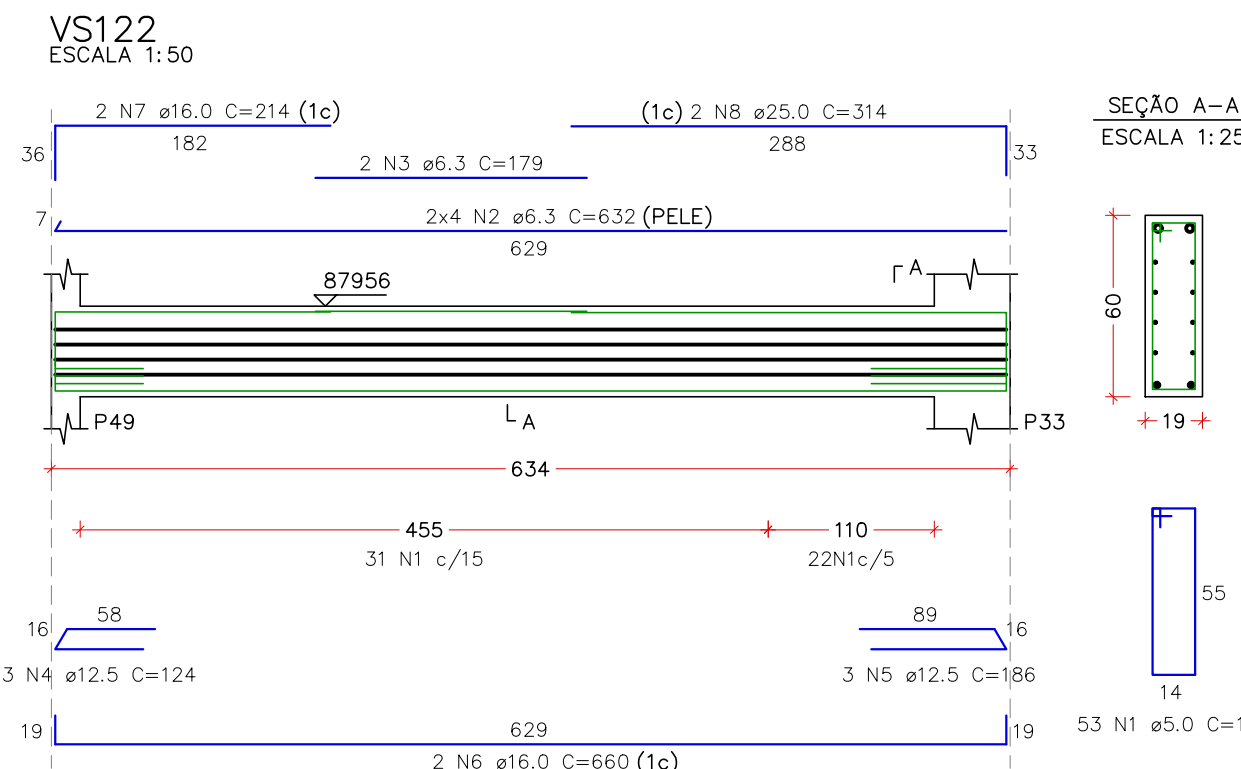
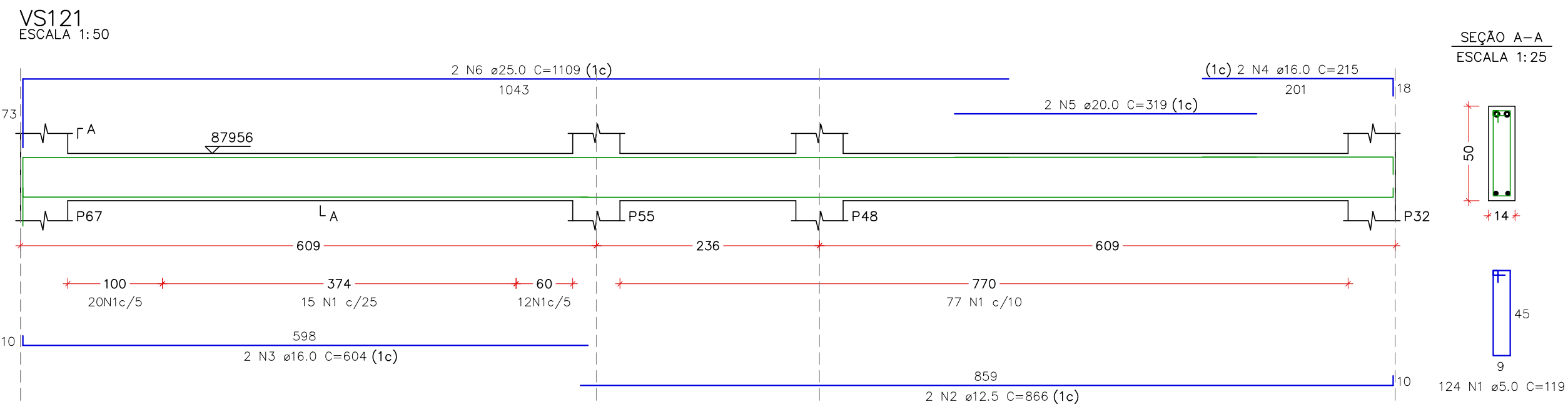
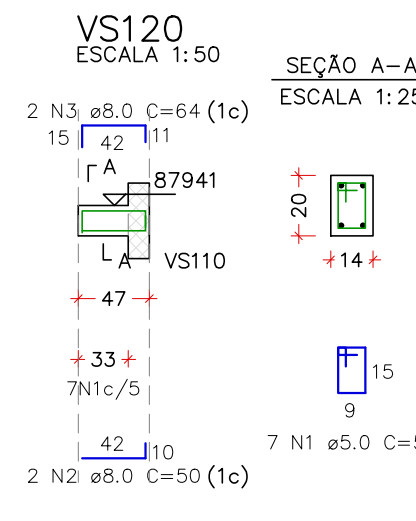
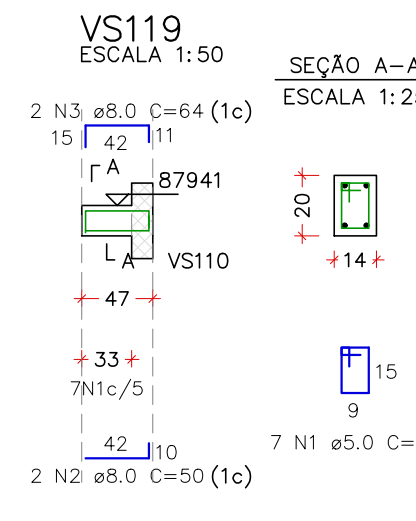
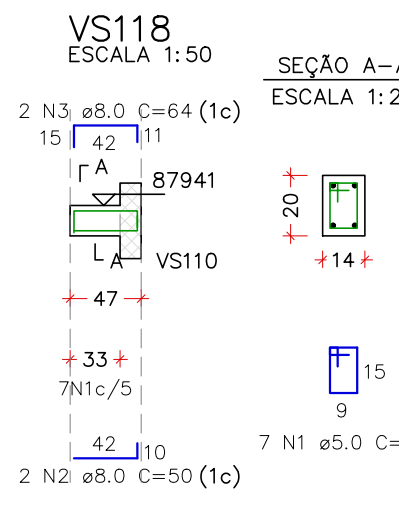
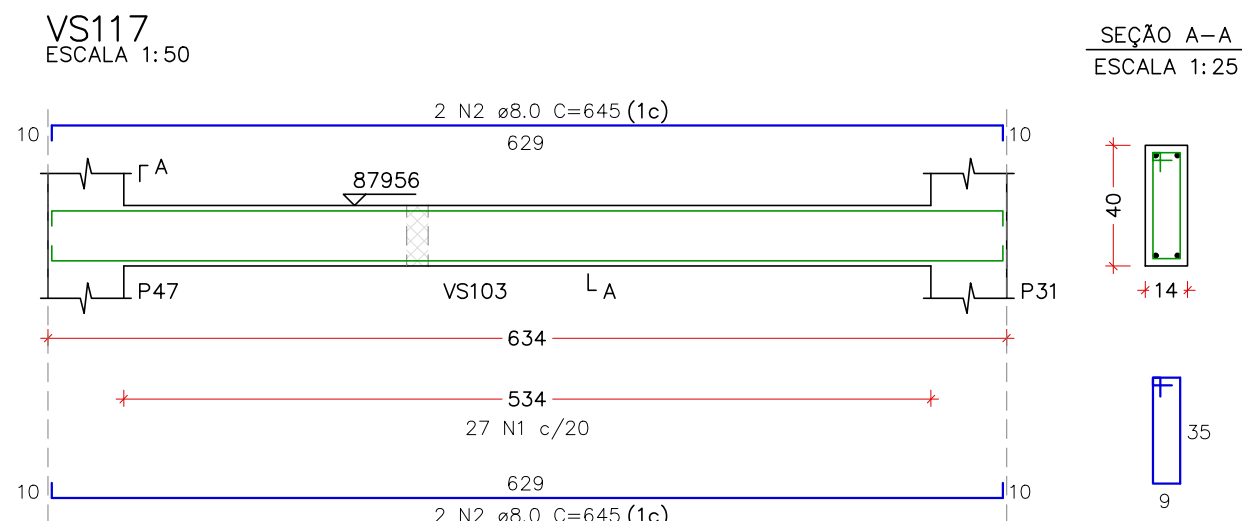
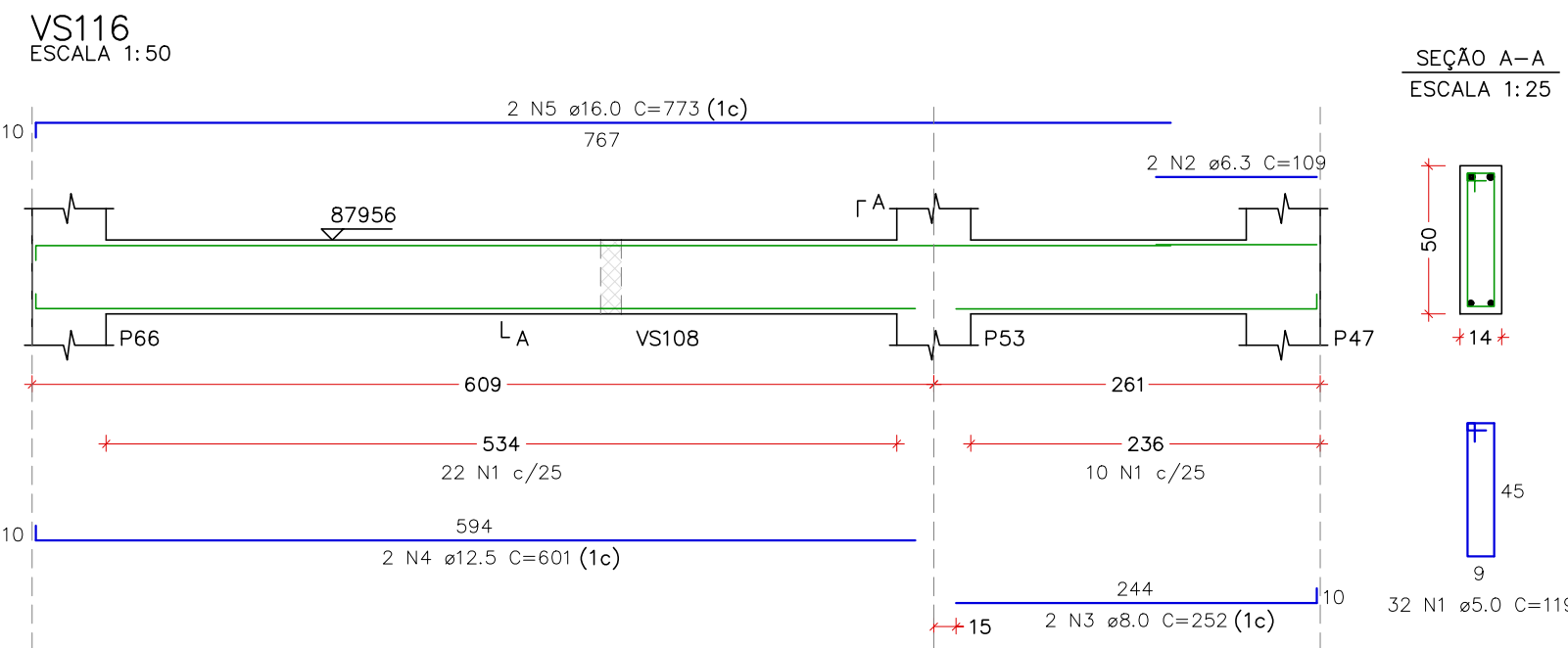


RELAÇÃO DO AÇO – PAV. SUPERIOR 1						
ELEMENTO	AÇO	N	DIAM (mm)	QUANT	C.UNIT (cm)	C.TOTAL (cm)
VS111	CA60	1	5,0	79	99	7821
	CA50	2	6,3	2	100	200
	CA50	3	8,0	2	1183	2366
	CA50	4	8,0	2	1198	2396
	CA50	5	8,0	2	1198	2396
VS112	CA60	1	5,0	2	99	198
	CA50	2	6,3	2	100	200
	CA50	3	8,0	2	85	170
	CA50	4	8,0	2	85	170
	CA50	5	8,0	2	85	170
VS113	CA60	1	5,0	2	99	198
	CA50	2	6,3	2	100	200
	CA50	3	8,0	2	845	1690
	CA50	4	8,0	2	845	1690
	CA50	5	8,0	2	845	1690
VS114	CA60	1	5,0	2	99	198
	CA50	2	6,3	2	100	200
	CA50	3	8,0	2	290	580
	CA50	4	8,0	2	290	580
	CA50	5	8,0	2	290	580
VS115	CA60	1	5,0	2	99	198
	CA50	2	6,3	2	100	200
	CA50	3	8,0	2	262	524
	CA50	4	8,0	2	262	524
	CA50	5	8,0	2	262	524
VS116	CA60	1	5,0	32	119	3808
	CA50	2	6,3	2	100	200
	CA50	3	8,0	2	773	1546
	CA50	4	8,0	2	773	1546
	CA50	5	8,0	2	773	1546
VS117	CA60	1	5,0	2	99	198
	CA50	2	6,3	2	100	200
	CA50	3	8,0	2	645	1290
	CA50	4	8,0	2	645	1290
	CA50	5	8,0	2	645	1290
VS118	CA60	1	5,0	2	99	198
	CA50	2	6,3	2	100	200
	CA50	3	8,0	2	64	128
	CA50	4	8,0	2	64	128
	CA50	5	8,0	2	64	128
VS119	CA60	1	5,0	2	99	198
	CA50	2	6,3	2	100	200
	CA50	3	8,0	2	64	128
	CA50	4	8,0	2	64	128
	CA50	5	8,0	2	64	128
VS120	CA60	1	5,0	2	99	198
	CA50	2	6,3	2	100	200
	CA50	3	8,0	2	64	128
	CA50	4	8,0	2	64	128
	CA50	5	8,0	2	64	128
VS121	CA60	1	5,0	2	99	198
	CA50	2	6,3	2	100	200
	CA50	3	8,0	2	64	128
	CA50	4	8,0	2	64	128
	CA50	5	8,0	2	64	128
VS122	CA60	1	5,0	2	99	198
	CA50	2	6,3	2	100	200
	CA50	3	8,0	2	64	128
	CA50	4	8,0	2	64	128
	CA50	5	8,0	2	64	128
VS123	CA60	1	5,0	2	99	198
	CA50	2	6,3	2	100	200
	CA50	3	8,0	2	64	128
	CA50	4	8,0	2	64	128
	CA50	5	8,0	2	64	128
VS124	CA60	1	5,0	2	99	198
	CA50	2	6,3	2	100	200
	CA50	3	8,0	2	64	128
	CA50	4	8,0	2	64	128
	CA50	5	8,0	2	64	128
VS125	CA60	1	5,0	2	99	198
	CA50	2	6,3	2	100	200
	CA50	3	8,0	2	64	128
	CA50	4	8,0	2	64	128
	CA50	5	8,0	2	64	128
VS126	CA60	1	5,0	2	99	198
	CA50	2	6,3	2	100	200
	CA50	3	8,0	2	64	128
	CA50	4	8,0	2	64	128
	CA50	5	8,0	2	64	128
VS127	CA60	1	5,0	2	99	198
	CA50	2	6,3	2	100	200
	CA50	3	8,0	2	64	128
	CA50	4	8,0	2	64	128
	CA50	5	8,0	2	64	128
VS128	CA60	1	5,0	2	99	198
	CA50	2	6,3	2	100	200
	CA50	3	8,0	2	64	128
	CA50	4	8,0	2	64	128
	CA50	5	8,0	2	64	128
VS129	CA60	1	5,0	2	99	198
	CA50	2	6,3	2	100	200
	CA50	3	8,0	2	64	128
	CA50	4	8,0	2	64	128
	CA50	5	8,0	2	64	128
VS130	CA60	1	5,0	2	99	198
	CA50	2	6,3	2	100	200
	CA50	3	8,0	2	64	128
	CA50	4	8,0	2	64	128
	CA50	5	8,0	2	64	128
VS131	CA60	1	5,0	2	99	198
	CA50	2	6,3	2	100	200
	CA50	3	8,0	2	64	128
	CA50	4	8,0	2	64	128
	CA50	5	8,0	2	64	128

RESUMO DO AÇO			
AÇO	DIAM (mm)	C.TOTAL (m)	PESO + 10% (kg)
CA50	6,3	211,4	56,9
CA50	8,0	188,7	81,9
CA50	10,0	6	4,1
CA50	12,5	70,6	74,8
CA50	16,0	7,7	131,5
CA50	20,0	33,1	89,9
CA60	5,0	49	207,5
CA60	5,0	712,4	120,8
PESO TOTAL (kg)			120,8
CA50	646,5		
CA60	120,8		

VOLUME DE CONCRETO (C=30) = 6,18 m³
ÁREA DE FORMA = 81,80 m²



REV. 03	31/03/25	REVISÃO DE PROJETO CONFORME ANÁLISE SOLICITADA	DAC
REV. 02	24/02/25	REVISÃO DE PROJETO CONFORME ANÁLISE SOLICITADA	DAC
REV. 01	30/10/24	REVISÃO DE PROJETO COMPLETO	DAC
REV. 00	02/02/24	EMIÇÃO INICIAL	DAC
REVISÃO DATA :	DESCRIÇÃO:		RESP.:
CLIENTE			
			
PROJETO	COORDENAÇÃO		
 Rua Cel. Joaquim Francisco, 341, Bairro Virgínia CEP-37501-052 - Itajubá / MG Tel. (35) 2143 - 9087 www.dacengenharia.com.br		ALOSIO CAETANO FERREIRA CREA: MG-97.132/D RESPONSÁVEL TÉCNICO E AUTOR	
EMPREENHIMENTO		CAU: 00A155411-5	
CONSTRUÇÃO DA ESCOLA MUNICIPAL ALEGRINHO			
ENDEREÇO	DISCIPLINA		
RUA LOURDES DE SOUZA SANTOS, COLINA VERDE POUSO ALEGRE – MINAS GERAIS	ESTRUTURAL		
ASSUNTO	FASE DO PROJETO		
PROJETO ESTRUTURAL EM CONCRETO ARMADO DETALHAMENTOS VIGAS DO PAV. SUPERIOR 1	EXECUTIVO		
DATA INICIAL	ESCALA	REVISÃO	ARQUIVO
02/02/2024	INDICADA	RO3	DAC-PMPA-ALEG-PE-EST-RO3.DWG
FOLHA Nº		34/53	